

# Care Partners



## Newsletter

*Spotlight | Care Pet-ners...2*

*Business Development | Nominations...3*

*New Hires | Birthdays | Bonuses |  
Opportunities...4*

*Upcoming Events | Meet the Nurse  
Practitioners | In the Know...5*

*Recipe | Riddle...6*



**CARE PARTNERS**

Transitional Medicine Care Management Home Care Senior Placement





# Binita Patel

## August Spotlight

Binita has been a registered nurse for 16 years now. Her experience spans from working as an RN in the Neonatal ICU, Pediatric ICU, and a nurse manager at an outpatient surgery center. Her career with Global Transitional Care actually started back in 2015, prior to Randy & Rodney acquiring the company. They both like to joke that when they received all the boxes to do their due diligence, she came jumping out of one of them ready to get started working again. Since her time with the company, she has grown in her role from Nurse educator to account implementation specialist to Director of Nursing and now to Vice President of Clinical Services. Her main role is to manage her amazing clinical team and the individual clinical protocols and workflows of each contract.

On a personal level, Binita has been married for 13 years to her husband Ricky, and they share 2 girls Zaiya (8), Leyla (6) and their adorable dog, Beckham (named after the handsome soccer star David Beckham). She enjoys spending her time with her friends and family, but also enjoys exercising and traveling. She was just blessed with a nephew, Riley, who she plans to spend most of her vacation days with!



## Care Pet-ners





# Meet the Business Development Team



**Marissa Acosta**  
**Program Manager, Disability Services**

Marissa owns our disability services program (contract with Regional Center) in both Orange County and the Inland Empire that assists disabled kids and adults with finding and receiving in-home respite care

**Catalina Elwell**  
**Account Executive**

Catalina owns the relationships with our referring partners in the community, covering south Orange County; she also runs point for business development of Care Assist and the Honor platform



**Patrick Nichols**  
**Account Executive**

Patrick owns the relationships with our referring partners in the community, covering north Orange County



**Ben Chamberlin**  
**Vice President Business Development**

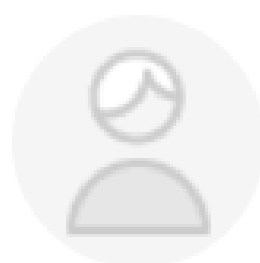
Ben oversees the growth and business development efforts and performance of our homecare business and the entire Care Partners company



**Gina Kamdar**  
**Life Care Manager**

Gina owns the relationships with the families and clients in Orange County, helping them sign onto service and maintains, along with the CCC team, the relationship throughout the client's time on service.

## Client Yelp Review



**Suzanne G.**

Seattle, WA

@ 0 ★ 1

★★★★★ 8/21/2022

Catalina seems to always be available to arrange caregivers, even for those difficult times of uncertainty, not knowing when a loved one will be sent home from a stay in a hospital or a nursing home. At 1,000 miles away, I am the closest family member and it gives me great ease of mind to know someone is there who has always been able to find care for my mother when she needs it.





# Personal Care Attendant New Hires

Tiffany Hayes - 7/7  
Juana Cisneros - 7/7  
Silla Njenga - 7/12  
Margarita Juarez - 7/12  
Dona Journet - 7/15  
Maria Ceja - 7/21  
Enoch Wu - 7/22  
Faith Geraldez - 7/22  
Raedine Perez - 7/22  
Hanh Ly - 7/22  
Michelle Nyx Kim - 7/22  
Ariel Farley - 7/26  
Valerie Moreno - 7/26

Maria Aguila - 7/28  
Ka'Liyah Maree - 7/28  
Susan Sanchez - 7/28  
Nicole Chaptini - 7/28  
Simra Jiyadi - 7/29  
Anita Baker - 7/29  
Roxanne Torres - 7/29

Welcome!

# Bonuses

## REFERRAL BONUS - \$250

Have a friend that would like working for us too? Let us know! If they get hired with us, you can make \$250! The person you refer needs to work 6 shifts within the first 2 weeks of being hired, and they need to let us know the first time they talk to us that you referred them. After they've worked for their first 2 weeks, reach out to the office so we can confirm their shifts and get your bonus on your next check.

## SIGN-ON BONUS - \$200

If you work a total of 160 hours or more in the first 2 months (about 80 hours per month) you can qualify for a \$200 bonus! At the end of your first 2 months working with us, reach out so we can confirm you qualify and get your bonus on your next check.



# August Birthdays

Rodney Burris – 8/2  
Brenda Williams – 8/4  
Amy Bawden – 8/6  
Carolina Mercado – 8/8  
Marla Mauter – 8/9  
Maria Villasano – 8/9  
Maria Hatulan – 8/10  
Zitlalli Luna – 8/10  
Yenci Diaz – 8/11  
Ben Chamberlin – 8/15  
Rowena Pelaske – 8/16

Hanh Ly – 8/17  
Silvia Campos – 8/18  
Blanca Ortiz – 8/21  
Cynthia Cervera – 8/22  
Idalisa Malembo – 8/26  
Maris Tambunan – 8/27  
Kristen Wilson – 8/27  
Monique Barragan – 8/29  
Evelyn Matta – 8/31  
Monica Bartolic – 8/31

Happy Birthday!!

# Opportunities

## Home Care

Looking for **Personal Care Attendants** in the following areas:

- + South Orange County
  - San Clemente
  - Mission Viejo
  - San Juan Capistrano
  - Dana Point
  - Laguna Niguel

## Transitional Medicine

Looking for the following:

- **Account Executive (Home Care)** - Inland Empire
- **Account Executive (Home Care)** - South Bay Area
- **Data Entry Clerk** - Costa Mesa
- **Patient Intake Coordinator/Medical Assistant** - Orange
- **Medical Director** - San Bernardino & Sacramento
- **Physicians** - Sacramento
- **Psychiatrist** - Santa ana
- **Associate Medical Director** - Long Beach
- **ER Nurse Manager (RN)** - Henderson, NV
- **Med/Surg Nurse Manager (RN)** - Las Vegas, NV

### Home Care Recruiting Contact

Alicia Prieto - Lead Recruiter  
949-596-4969  
aprieto@carepartners.us

### Clinical Recruiting Contact

Anna Kim - Clinical Recruiter  
949-522-946  
akim@carepartners.us



# Meet the Transitional Medicine Nurse Pracitioners



Blythe Huang - OC



Cynthia Tadeo - OC



Christina Furuya - OC



Christine Moak - OC



Sylvia Sevilla - OC



Kay Cho - OC



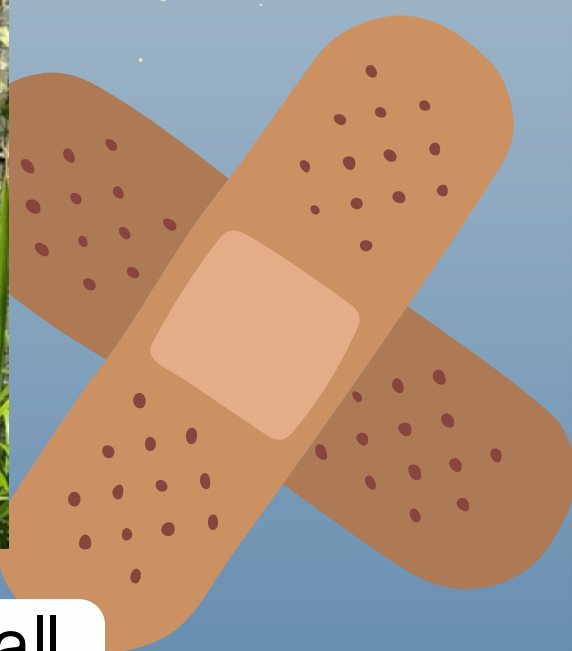
Tina Kami - OC



Chelsea Garvin - IE



Perla Monzon - On Call Nurse Practitioner



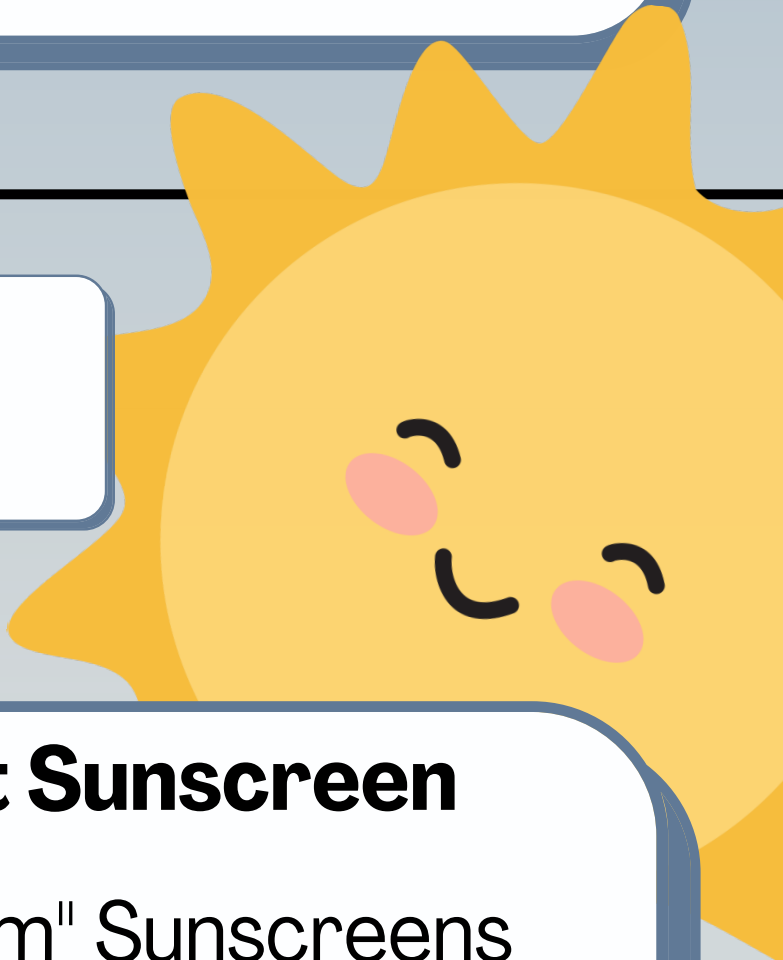
# Upcoming Events



## American Red Cross

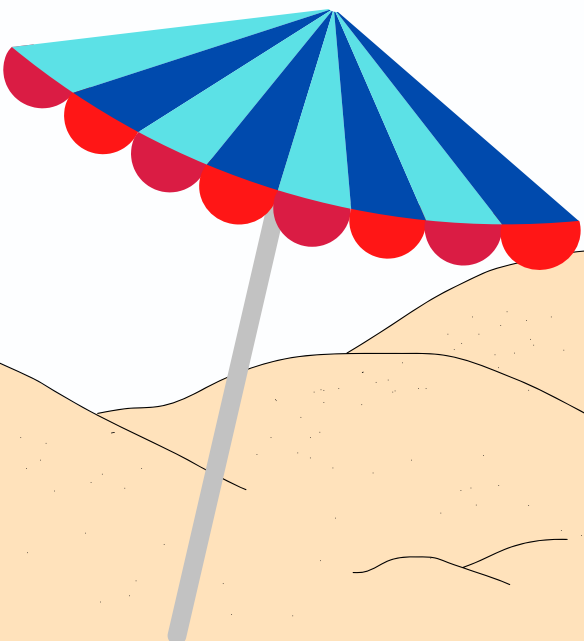
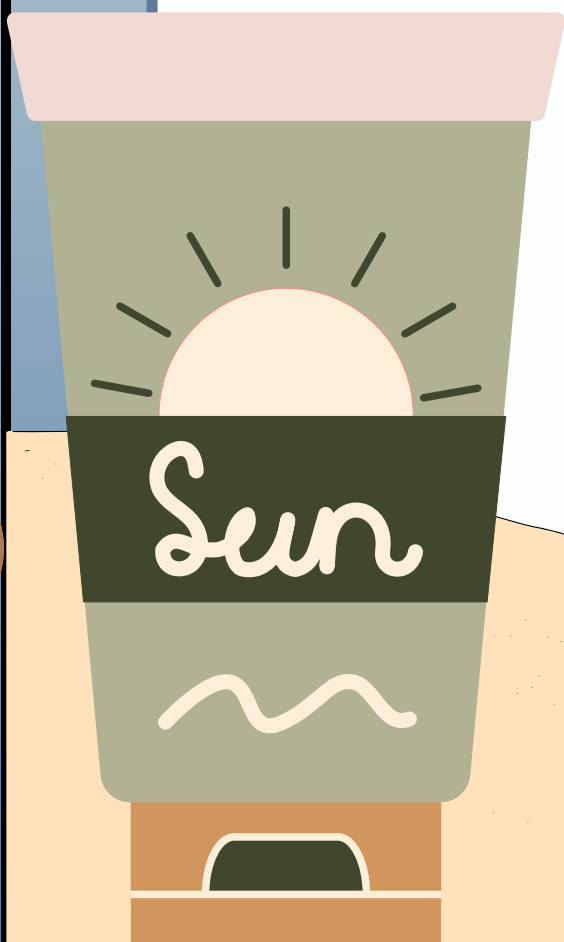
Care Partners is having our next blood drive on October 24th, 2022! Be on the lookout for a flyer so you can sign up to save some lives!  
This will be held here at our office in Costa Mesa

# In The Know



## 5 Facts about Sunscreen

- 1. "Broad Spectrum" Sunscreens are the best in protecting against UV radiation.
- 2. Sunscreens with at least 30 SPF block over 95% of the sun's rays.
- 3. No sunscreen is waterproof—reapply at least after 80 minutes in the water.
- 4. Daily usage of sunscreen outdoors & indoors prevent premature skin aging.
- 5. Sunscreen has an expiration date.





# Recipe - Blueberry Compote

**Frozen Blueberries - 2 cups**

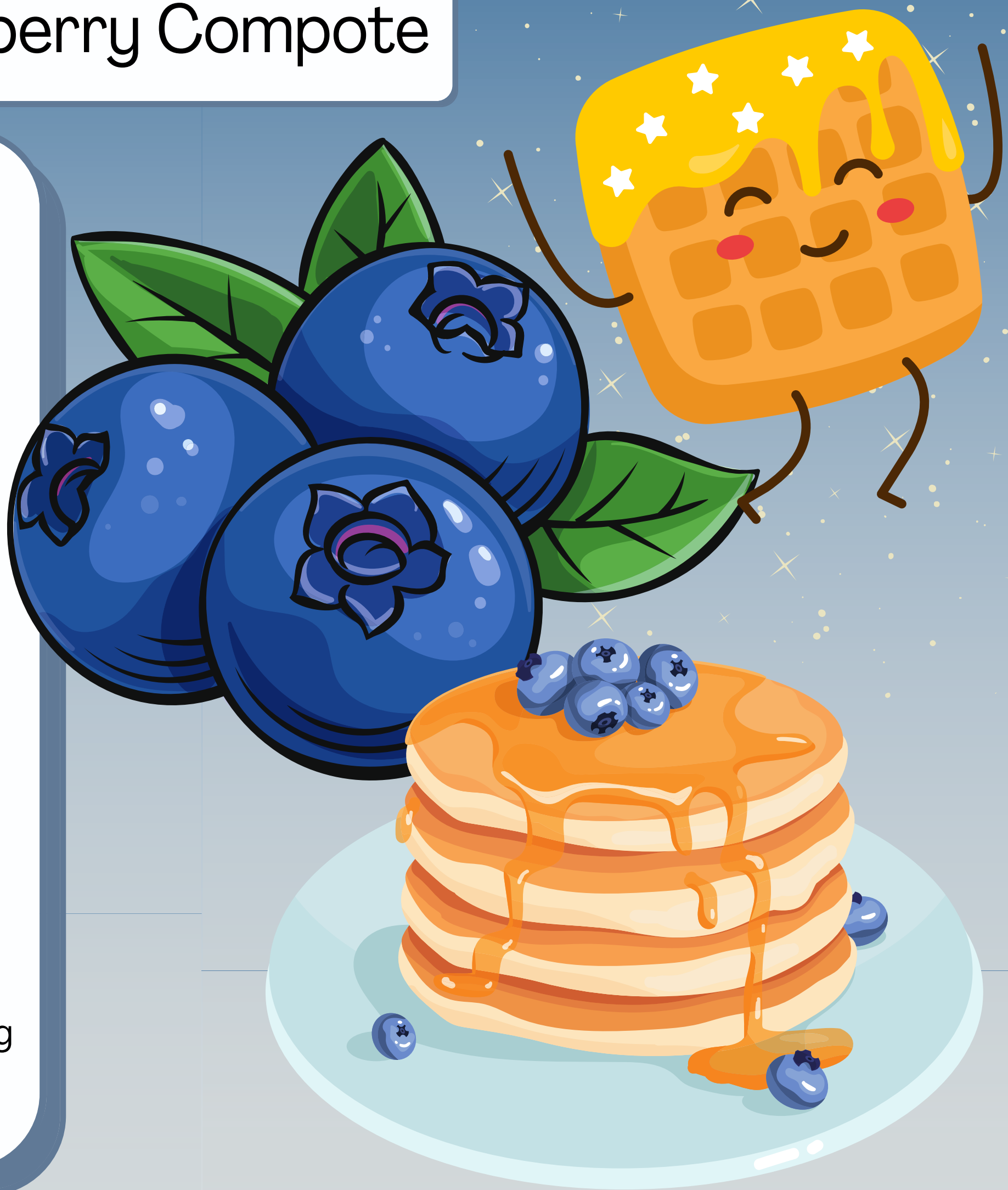
**White Sugar - 1/4 cup**

**Lemon Juice - 1 tbsp**

**Water - 2 tbsp**

1. Combine 1 cup frozen blueberries, 1/4 cup white sugar, 1 tbsp lemon juice and 2 tbsp water over medium high heat in a saucepan for 10 minutes - stir every few minutes to ensure the sugar is melting and not burning.
2. After 10 minutes, turn the heat to low and add the remaining frozen blueberries.
3. Stir frequently for another 8-10 minutes until some blueberries are mushy or burst. You want all the blueberries heated through but not all of them completely cooked.

Blueberry compote can be served over pancakes, waffles, yogurt or even used in beverages depending on preference. Enjoy!



## Riddle

- ① When is a door, no longer a door?
- ② What has 13 hearts and no other organs?

Text your answer to

**949-300-8361**

The first correct answers get a prize!

## Contact Info

150 Paularino Ave  
Suite D-182  
Costa Mesa, CA 92626

2900 Adams St  
Suite C-260  
Riverside, CA 92504

PH: 949-556-3433